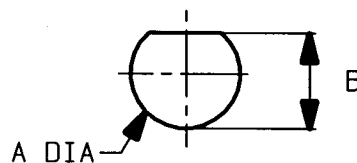
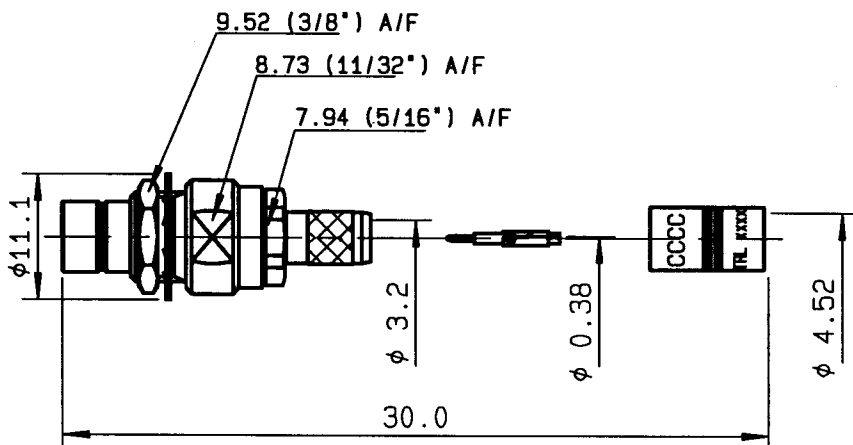


STRAIGHT CONNECTOR C-C MALE CRIMP TYPE
CABLE 3.6/75 DS

PLUG 43/5F

PERCEGE PANNEAU

MOUNTING HOLE



	MM		INCH	
	maxi	mini	maxi	mini
A	8.04	7.94	0.317	0.31
B	7.5	7.4	0.295	0.291

CABLES : BT3002

CHARACTERISTICS

NOMINAL IMPEDANCE	75	Ω
FREQUENCY RANGE	0-3	GHz
TEMPERATURE RATING	-40/+100	$^{\circ}C$
VSWR	NA +	0 x F(GHz)Max1
RF INSERTION LOSS	NA	\sqrt{F} (GHz) dB Max1
VOLTAGE RATING	NA	Vrms Max
DIELECTRIC WITHSTANDING VOLTAGE	1500	Vrms min
INSULATION RESISTANCE	5000	M Ω min
HERMETIC SEAL	NA	Atm.cm3/s
LEAKAGE (pressurized only)	NA	Mpa
WEIGHT	9	gr

APPLICABLE STANDARDS

CABLE RETENTION	150	N min
CENTER CONTACT RETENTION		
Axial force - mating end	22	N min
Axial force - opposite end	NA	N min
Torque (Min)	NA	cm.N min
RECOMMENDED TORQUES		
Mating	NA	cm.N
Panel nut	170	cm.N
Crimp Body	100	cm.N

CONSTRUCTION

CONNECTOR PARTS	MATERIALS	FINISH
BODY	BRASS	GOLD
OUTER CONTACT	-	-
CENTER CONTACT	BRASS	GOLD
INSULATOR	PTFE	-
CRIMP BODY	BRASS	NICKEL
NUT	BRASS	NICKEL
WASHER	BRONZE PHOSPHOR	NICKEL
FERRULE	BRASS	NICKEL
-	-	-

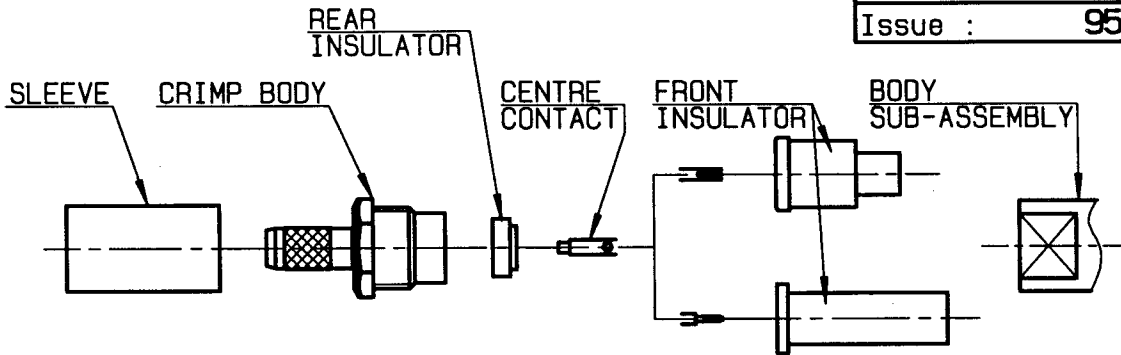
ISSUE	REVISION No	DESCRIPTION	BY	DATE
-	-	-	-	-
-	-	-	-	-
-	-	-	-	-
-	-	-	-	-

initiated on 29/09/94

The information given here is subject to change without notice. Design changes may be in order to improve the product

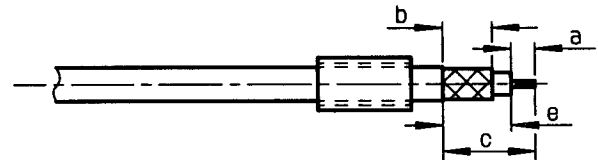


Approval by MARTIN



①

Slide ferrule onto cable.
Strip cable.

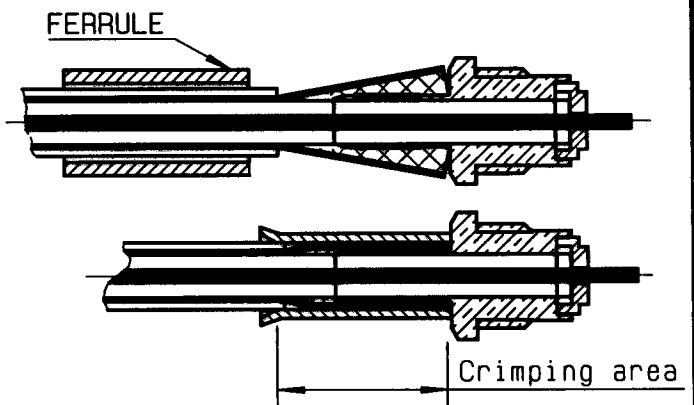


Stripping	a	b	c	d	e
inch	0.177	0.315	0.827	0	0.65
mm	4.5	8	21	-	16.5

②

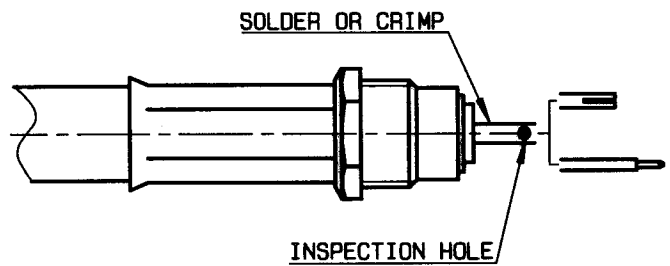
Guide cable dielectric into crimp body while fanning braid. Ensure body abutts cable. Slide ferrule forward until ferrule abutts crimp body.
Crimp ferrule.

R282.287.000
die set R282.265.002 (Hex. 4.52).



③

Place centre contact on inner conductor ensure centre contact is seated on insulator. (inner conductor will be visible through inspection hole)
Crimp/solder centre contact.
Crimp tool R282.281.010.



④

Place front insulator over centre contact. Ensure it sits firmly on spigot on rear insulator.
Place body sub-assembly over front insulator.
Screw on body sub-assembly on to crimp body and tighten.
Typical tightening torque 100 cm N.

